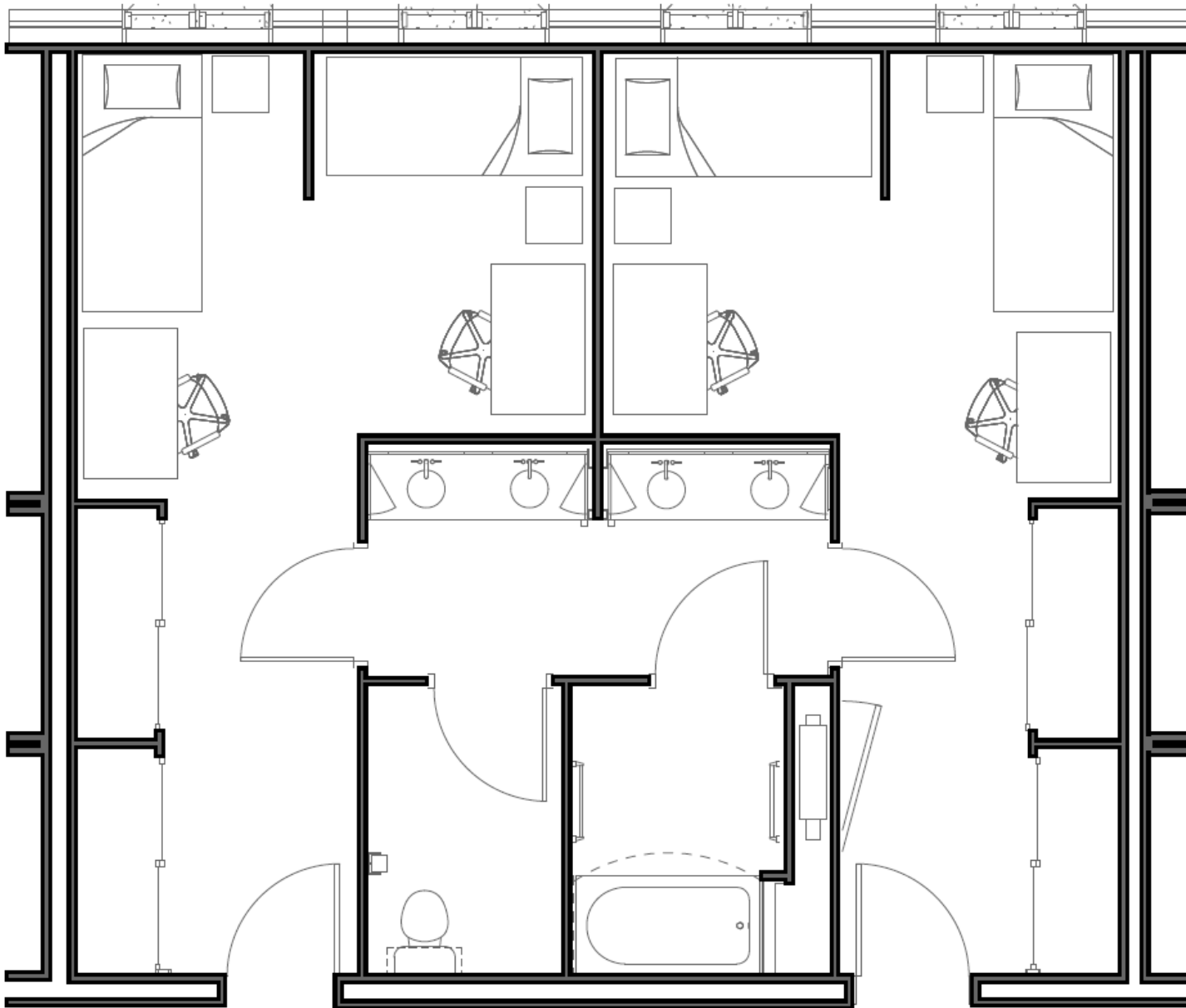


# Irvington House



## **Beds**

- . Twin XL pillow top
- . 80" L x 39" W x 10" H
- . Frame: 22" high
- . Night stand provided
- . Four drawer dresser beneath

## **Desks**

- . 38" L x 24" W x 30" H
- . Bottom shelf, no drawers
- . Chair provided

## **Closets**

- . One per resident
- . 2' L x 6' W x 6' H
- . Wire shelving

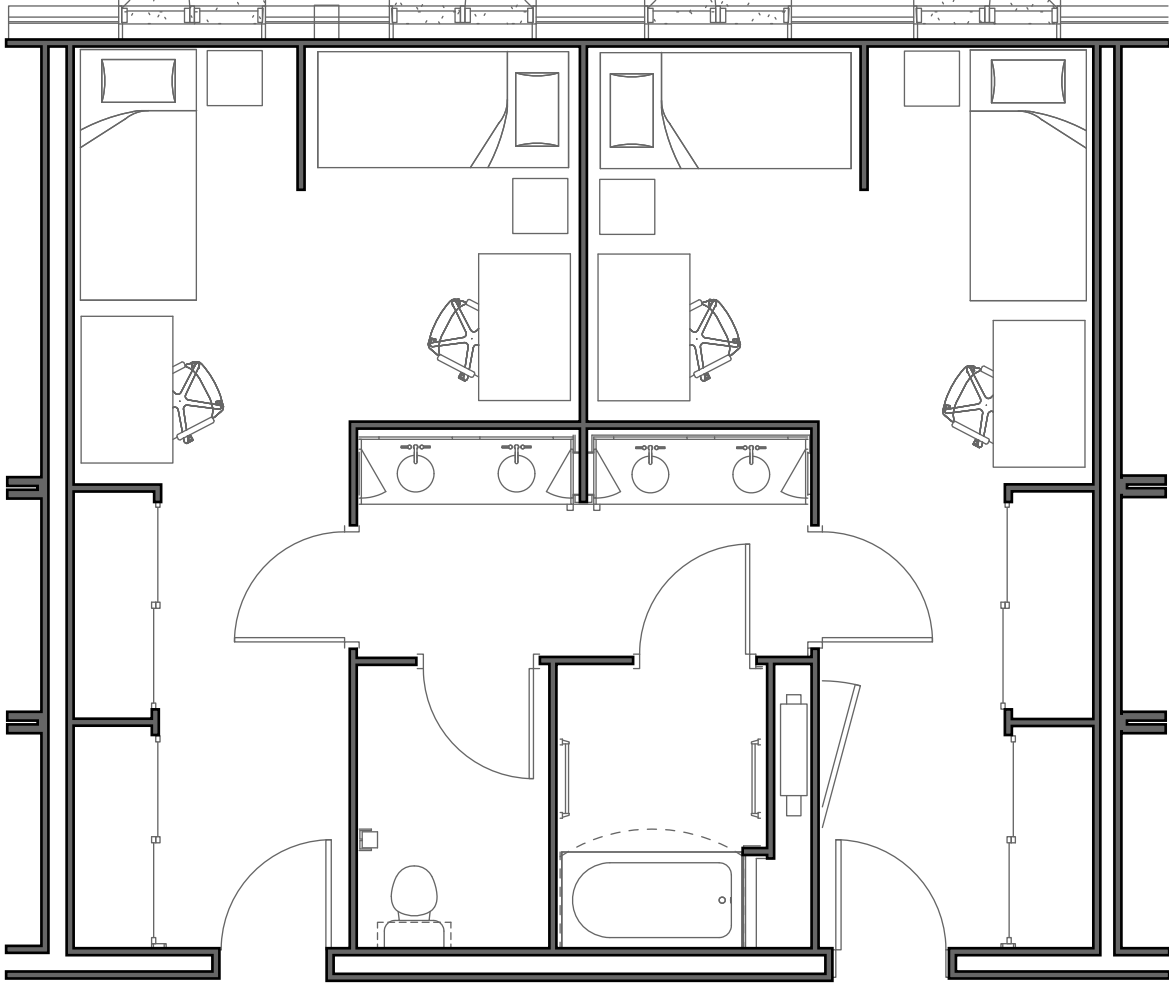
## **Bathroom**

- . One sink and medicine cabinet per resident
- . Toilet and shower in different rooms

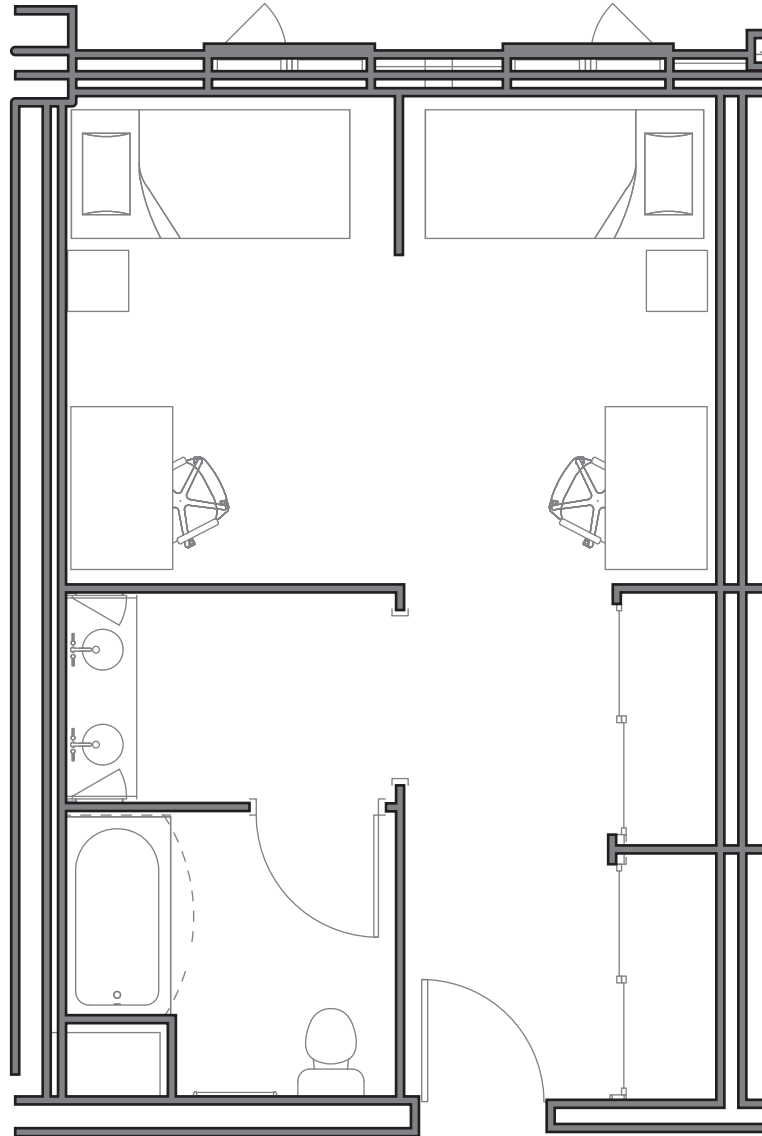
## **Additional info**

- . Operable windows
- . Climate control separate per suite
- . Wood style flooring throughout

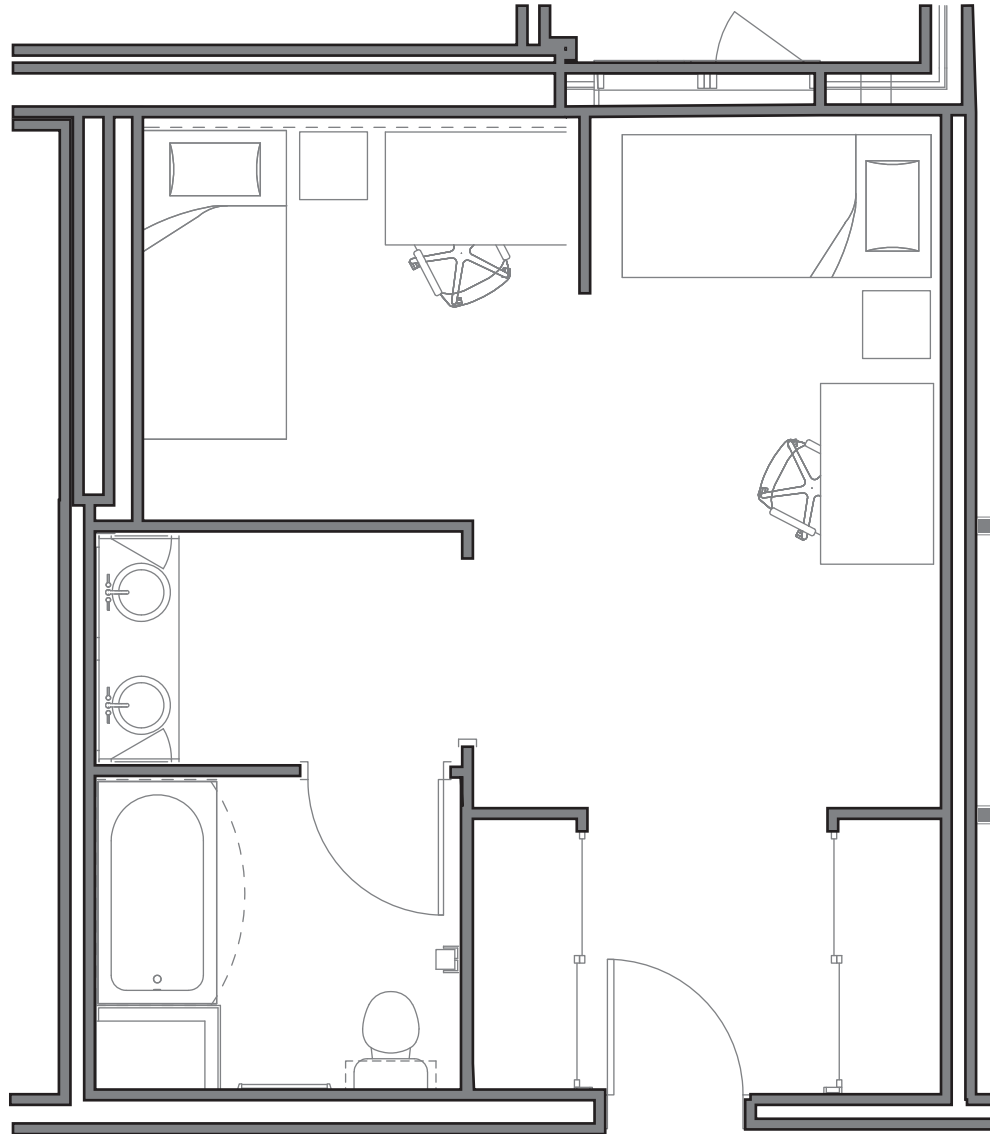
IRVINGTON HOUSE  
UNIT A-1 | 730 SF



IRVINGTON HOUSE  
UNIT B-1 | 415 SF



IRVINGTON HOUSE  
UNIT C-1 | 440 SF



IRVINGTON HOUSE  
UNIT F-1 | 515 SF

